

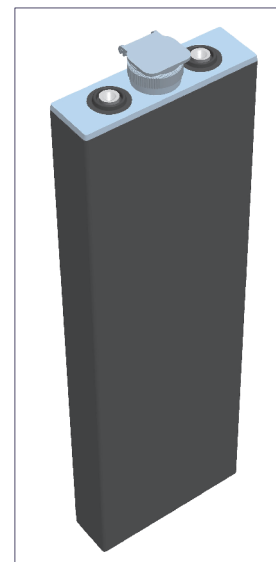
2PzB 200

(2V200Ah/5HR)



Specification

Voltage Per Unit	2V(single cell)
Capacity	200Ah@5hr-rate to 1.70V per cell @25°C
Weight	Approx. without electrolyte 9.8 Kg Approx. including electrolyte 12.2 Kg
High Rate Discharge Current	200 A
Operating Temperature Range	Discharge: -40°C~60°C Charge: -20°C~50°C Storage: -40°C~60°C
Optimal Operating Temperature Range	25°C ± 5°C
Maximum Charging Current	30.0A
Cycle charged	2.65 to 2.85 VDC/unit Average at 25°C
Self Discharge	Self-discharge ratio less than 5% per month at 25°C. Please charge batteries before using.
Terminal	D2(M10 Copper Terminals) & D4(Lead Terminals)
Dimensions (L×W×H×TH)	45mm×158mm×683mm×713mm(Total High)



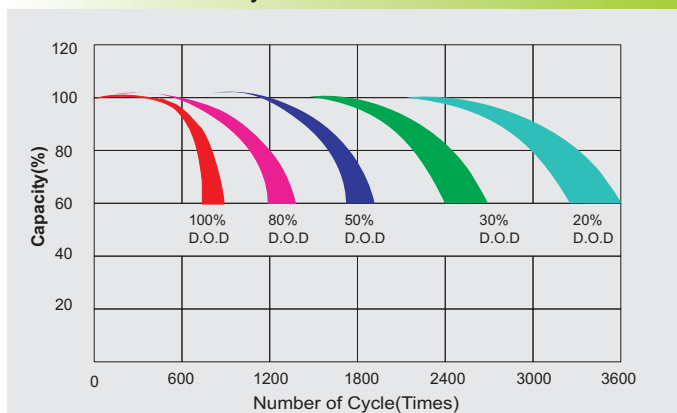
Constant Current Discharge Characteristics : A(25°C)

F.V/Time	30MIN	1HR	2HR	3HR	4HR	5HR	6HR	8HR	10HR
1.60V	189.5	132.7	76.9	57.6	47.0	42.1	36.5	28.4	23.5
1.65V	185.1	129.6	75.1	56.2	45.9	41.2	35.7	27.8	22.9
1.70V	179.9	126.0	73.0	54.7	44.6	40.0	34.7	27.0	22.3
1.75V	173.1	121.2	70.2	52.6	42.9	38.5	33.3	26.0	21.4
1.80V	165.2	115.7	67.0	50.2	41.0	36.7	31.8	24.8	20.5
1.85V	156.5	109.6	63.5	47.6	38.8	34.8	30.2	23.5	19.4

Constant Power Discharge Characteristics : W(25°C)

F.V/Time	30MIN	1HR	2HR	3HR	4HR	5HR	6HR	8HR	10HR
1.60V	354.3	255.5	151.0	114.2	93.3	83.7	72.6	56.6	46.8
1.65V	348.0	250.2	147.9	112.0	91.5	82.1	71.2	55.5	45.8
1.70V	342.2	243.6	143.9	109.2	89.1	80.0	69.3	54.0	44.6
1.75V	329.3	234.3	138.5	105.0	85.7	76.9	66.7	51.9	42.9
1.80V	314.7	224.9	132.9	100.3	81.9	73.5	63.7	49.6	41.0
1.85V	299.9	214.8	126.9	95.1	77.6	69.6	60.3	47.0	38.8

Life characteristics of cyclic use



Charge characteristic Curve for cycle use

