

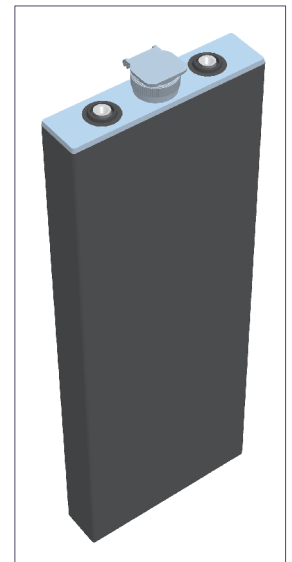
2PzS 160

(2V160Ah/5HR)



Specification

Voltage Per Unit	2V(single cell)
Capacity	160Ah@5hr-rate to 1.70V per cell @25°C
Weight	Approx. without electrolyte 8.8 Kg Approx. including electrolyte 10.7 Kg
High Rate Discharge Current	160 A
Operating Temperature Range	Discharge: -40°C~60°C Charge: -20°C~50°C Storage: -40°C~60°C
Optimal Operating Temperature Range	25°C ± 5°C
Maximum Charging Current	24.0 A
Cycle charged	2.65 to 2.85 VDC/unit Average at 25°C
Self Discharge	Self-discharge ratio less than 5% per month at 25°C. Please charge batteries before using.
Terminal	D2(M10 Copper Terminals) & D4(Lead Terminals)
Dimensions (L×W×H×TH)	47mm×198mm×405mm×435mm(Total High)



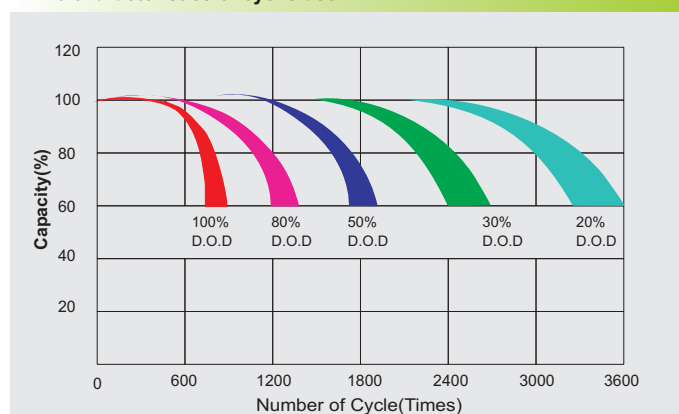
Constant Current Discharge Characteristics : A(25°C)

F.V/Time	30MIN	1HR	2HR	3HR	4HR	5HR	6HR	8HR	10HR
1.60V	151.6	106.1	61.5	46.0	37.6	33.7	29.2	22.7	18.8
1.65V	148.1	103.7	60.1	45.0	36.7	32.9	28.5	22.2	18.4
1.70V	143.9	100.8	58.4	43.7	35.7	32.0	27.7	21.6	17.8
1.75V	138.5	96.9	56.2	42.1	34.3	30.8	26.7	20.8	17.2
1.80V	132.2	92.6	53.6	40.2	32.8	29.4	25.5	19.8	16.4
1.85V	125.2	87.7	50.8	38.1	31.0	27.8	24.1	18.8	15.5

Constant Power Discharge Characteristics : W(25°C)

F.V/Time	30MIN	1HR	2HR	3HR	4HR	5HR	6HR	8HR	10HR
1.60V	283.5	204.4	120.8	91.3	74.6	67.0	58.1	45.3	37.4
1.65V	278.4	200.2	118.3	89.6	73.2	65.7	56.9	44.4	36.7
1.70V	273.7	194.9	115.2	87.4	71.3	64.0	55.5	43.2	35.7
1.75V	263.5	187.4	110.8	84.0	68.6	61.5	53.3	41.5	34.3
1.80V	251.8	180.0	106.3	80.2	65.5	58.8	50.9	39.7	32.8
1.85V	240.0	171.8	101.5	76.1	62.1	55.7	48.3	37.6	31.0

Life characteristics of cyclic use



Charge characteristic Curve for cycle use

