

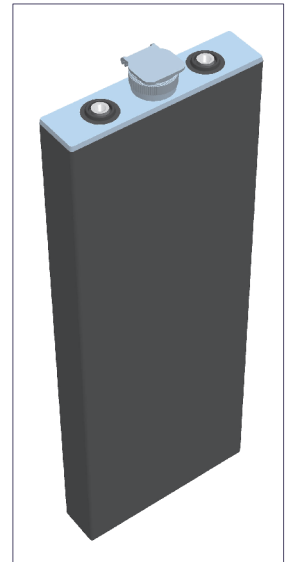
2PzS 180

(2V180Ah/5HR)



Specification

Voltage Per Unit	2V(single cell)
Capacity	180Ah@5hr-rate to 1.70V per cell @25°C
Weight	Approx. without electrolyte 9.6 Kg Approx. including electrolyte 11.8 Kg
High Rate Discharge Current	180 A
Operating Temperature Range	Discharge: -40°C~60°C Charge: -20°C~50°C Storage: -40°C~60°C
Optimal Operating Temperature Range	25°C ± 5°C
Maximum Charging Current	27.0 A
Cycle charged	2.65 to 2.85 VDC/unit Average at 25°C
Self Discharge	Self-discharge ratio less than 5% per month at 25°C. Please charge batteries before using.
Terminal	D2(M10 Copper Terminals) & D4(Lead Terminals)
Dimensions (L×W×H×TH)	47mm×198mm×475mm×505mm(Total High)



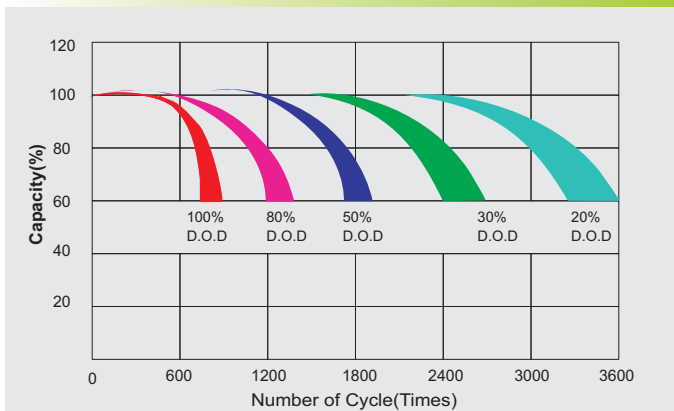
Constant Current Discharge Characteristics : A(25 °C)

F.V/Time	30MIN	1HR	2HR	3HR	4HR	5HR	6HR	8HR	10HR
1.60V	170.5	119.4	69.2	51.8	42.3	37.9	32.9	25.6	21.1
1.65V	166.6	116.7	67.6	50.6	41.3	37.0	32.1	25.0	20.6
1.70V	161.9	113.4	65.7	49.2	40.1	36.0	31.2	24.3	20.1
1.75V	155.8	109.0	63.2	47.3	38.6	34.6	30.0	23.4	19.3
1.80V	148.7	104.1	60.3	45.2	36.9	33.1	28.7	22.3	18.4
1.85V	140.9	98.7	57.2	42.8	34.9	31.3	27.2	21.1	17.5

Constant Power Discharge Characteristics : W(25 °C)

F.V/Time	30MIN	1HR	2HR	3HR	4HR	5HR	6HR	8HR	10HR
1.60V	318.9	229.9	135.9	102.7	84.0	75.4	65.3	50.9	42.1
1.65V	313.2	225.2	133.1	100.8	82.3	73.9	64.1	49.9	41.3
1.70V	307.9	219.2	129.6	98.3	80.2	72.0	62.4	48.6	40.1
1.75V	296.4	210.9	124.6	94.5	77.1	69.2	60.0	46.7	38.6
1.80V	283.3	202.5	119.6	90.3	73.7	66.1	57.3	44.6	36.9
1.85V	269.9	193.3	114.2	85.6	69.9	62.7	54.3	42.3	34.9

Life characteristics of cyclic use



Charge characteristic Curve for cycle use

