

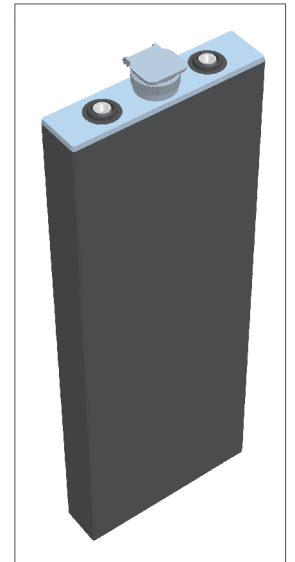
2PzS 210

(2V210Ah/5HR)



Specification

Voltage Per Unit	2V(single cell)
Capacity	210Ah@5hr-rate to 1.70V per cell @25°C
Weight	Approx. without electrolyte 10.7 Kg Approx. including electrolyte 13.2 Kg
High Rate Discharge Current	210 A
Operating Temperature Range	Discharge: -40°C~60°C Charge: -20°C~50°C Storage: -40°C~60°C
Optimal Operating Temperature Range	25°C ± 5°C
Maximum Charging Current	31.5 A
Cycle charged	2.65 to 2.85 VDC/unit Average at 25°C
Self Discharge	Self-discharge ratio less than 5% per month at 25°C. Please charge batteries before using.
Terminal	D2(M10 Copper Terminals) & D4(Lead Terminals)
Dimensions (L×W×H×TH)	47mm×198mm×504mm×534mm(Total High)



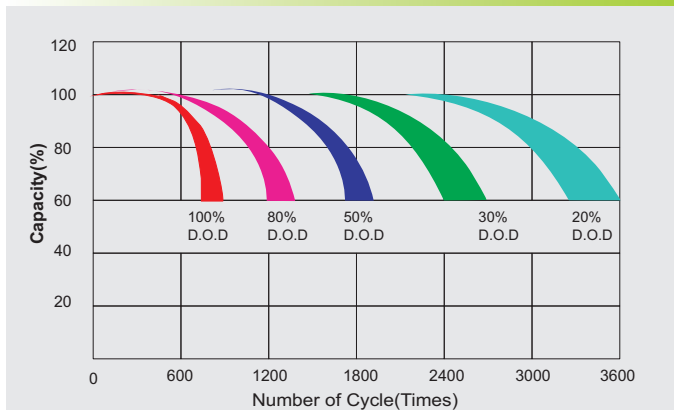
Constant Current Discharge Characteristics : A(25°C)

F.V/Time	30MIN	1HR	2HR	3HR	4HR	5HR	6HR	8HR	10HR
1.60V	198.9	139.3	80.7	60.4	49.3	44.2	38.3	29.8	24.7
1.65V	194.4	136.1	78.9	59.1	48.2	43.2	37.5	29.2	24.1
1.70V	188.9	132.3	76.7	57.4	46.8	42.0	36.4	28.4	23.4
1.75V	181.7	127.2	73.7	55.2	45.0	40.4	35.0	27.3	22.5
1.80V	173.5	121.5	70.4	52.7	43.0	38.6	33.4	26.0	21.5
1.85V	164.3	115.1	66.7	49.9	40.8	36.5	31.7	24.7	20.4

Constant Power Discharge Characteristics : W(25°C)

F.V/Time	30MIN	1HR	2HR	3HR	4HR	5HR	6HR	8HR	10HR
1.60V	372.1	268.3	158.5	119.9	98.0	87.9	76.2	59.4	49.1
1.65V	365.4	262.7	155.3	117.6	96.0	86.2	74.7	58.2	48.1
1.70V	359.3	255.8	151.1	114.7	93.6	84.0	72.8	56.7	46.8
1.75V	345.8	246.0	145.4	110.3	90.0	80.8	70.0	54.5	45.0
1.80V	330.5	236.2	139.6	105.3	86.0	77.1	66.9	52.1	43.0
1.85V	314.9	225.5	133.3	99.9	81.5	73.1	63.4	49.3	40.8

Life characteristics of cyclic use



Charge characteristic Curve for cycle use

