

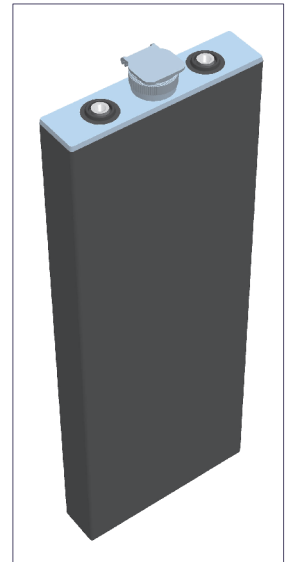
2PzS 230

(2V230Ah/5HR)



Specification

Voltage Per Unit	2V(single cell)
Capacity	230Ah@5hr-rate to 1.70V per cell @25°C
Weight	Approx. without electrolyte 11.5 Kg Approx. including electrolyte 14.2 Kg
High Rate Discharge Current	230 A
Operating Temperature Range	Discharge: -40°C~60°C Charge: -20°C~50°C Storage: -40°C~60°C
Optimal Operating Temperature Range	25°C ± 5°C
Maximum Charging Current	34.5 A
Cycle charged	2.65 to 2.85 VDC/unit Average at 25°C
Self Discharge	Self-discharge ratio less than 5% per month at 25°C. Please charge batteries before using.
Terminal	D2(M10 Copper Terminals) & D4(Lead Terminals)
Dimensions (L×W×H×TH)	47mm×198mm×545mm×575mm(Total High)



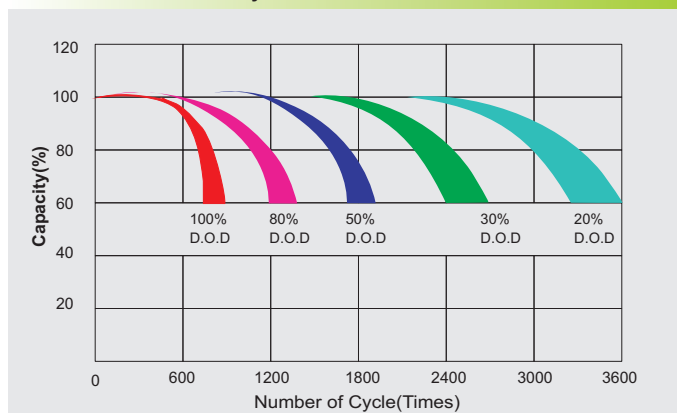
Constant Current Discharge Characteristics : A(25 °C)

F.V/Time	30MIN	1HR	2HR	3HR	4HR	5HR	6HR	8HR	10HR
1.60V	217.9	152.6	88.4	66.2	54.0	48.4	42.0	32.7	27.0
1.65V	212.9	149.1	86.4	64.7	52.8	47.3	41.0	31.9	26.4
1.70V	206.9	144.9	84.0	62.9	51.3	46.0	39.9	31.1	25.6
1.75V	199.0	139.3	80.7	60.4	49.3	44.2	38.3	29.9	24.7
1.80V	190.0	133.1	77.1	57.7	47.1	42.2	36.6	28.5	23.5
1.85V	180.0	126.1	73.1	54.7	44.6	40.0	34.7	27.0	22.3

Constant Power Discharge Characteristics : W(25 °C)

F.V/Time	30MIN	1HR	2HR	3HR	4HR	5HR	6HR	8HR	10HR
1.60V	407.5	293.8	173.6	131.3	107.3	96.3	83.5	65.1	53.8
1.65V	400.2	287.8	170.0	128.8	105.2	94.4	81.8	63.8	52.7
1.70V	393.5	280.1	165.5	125.6	102.5	92.0	79.7	62.1	51.3
1.75V	378.7	269.5	159.2	120.8	98.6	88.5	76.7	59.7	49.3
1.80V	362.0	258.7	152.9	115.4	94.2	84.5	73.2	57.0	47.1
1.85V	344.9	247.0	146.0	109.4	89.3	80.1	69.4	54.0	44.6

Life characteristics of cyclic use



Charge characteristic Curve for cycle use

