

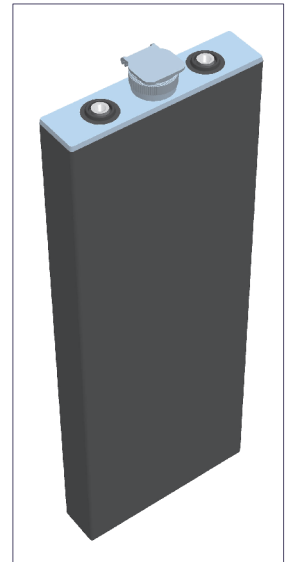
2PzS 250

(2V250Ah/5HR)



Specification

Voltage Per Unit	2V(single cell)
Capacity	250Ah@5hr-rate to 1.70V per cell @25°C
Weight	Approx. without electrolyte 11.9 Kg Approx. including electrolyte 15.0 Kg
High Rate Discharge Current	250 A
Operating Temperature Range	Discharge: -40°C~60°C Charge: -20°C~50°C Storage: -40°C~60°C
Optimal Operating Temperature Range	25°C ± 5°C
Maximum Charging Current	37.5 A
Cycle charged	2.65 to 2.85 VDC/unit Average at 25°C
Self Discharge	Self-discharge ratio less than 5% per month at 25°C. Please charge batteries before using.
Terminal	D2(M10 Copper Terminals) & D4(Lead Terminals)
Dimensions (L×W×H×TH)	47mm×198mm×570mm×600mm(Total High)



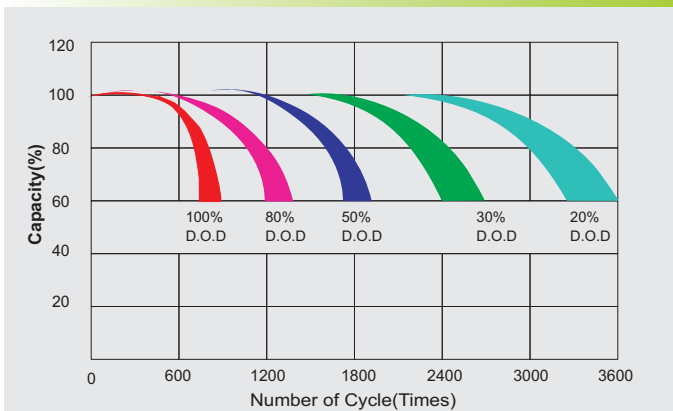
Constant Current Discharge Characteristics : A(25 °C)

F.V/Time	30MIN	1HR	2HR	3HR	4HR	5HR	6HR	8HR	10HR
1.60V	236.8	165.8	96.1	71.9	58.7	52.6	45.6	35.5	29.3
1.65V	231.4	162.0	93.9	70.3	57.4	51.4	44.6	34.7	28.7
1.70V	224.9	157.5	91.3	68.3	55.8	50.0	43.3	33.8	27.9
1.75V	216.3	151.4	87.7	65.7	53.6	48.1	41.7	32.5	26.8
1.80V	206.5	144.6	83.8	62.7	51.2	45.9	39.8	31.0	25.6
1.85V	195.7	137.1	79.4	59.5	48.5	43.5	37.7	29.4	24.3

Constant Power Discharge Characteristics : W(25 °C)

F.V/Time	30MIN	1HR	2HR	3HR	4HR	5HR	6HR	8HR	10HR
1.60V	442.9	319.4	188.7	142.7	116.6	104.7	90.7	70.7	58.5
1.65V	435.0	312.8	184.8	140.0	114.3	102.6	89.0	69.3	57.3
1.70V	427.7	304.5	179.9	136.6	111.4	100.0	86.7	67.5	55.8
1.75V	411.7	292.9	173.1	131.3	107.1	96.2	83.3	64.9	53.6
1.80V	393.4	281.2	166.2	125.4	102.4	91.8	79.6	62.0	51.2
1.85V	374.9	268.5	158.7	118.9	97.0	87.0	75.4	58.7	48.5

Life characteristics of cyclic use



Charge characteristic Curve for cycle use

