

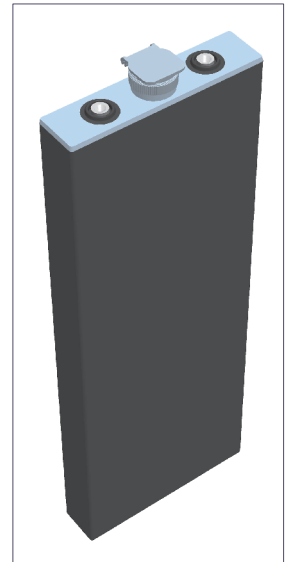
2PzS 280

(2V280Ah/5HR)



Specification

Voltage Per Unit	2V(single cell)
Capacity	280Ah@5hr-rate to 1.70V per cell @25°C
Weight	Approx. without electrolyte 13.9 Kg Approx. including electrolyte 17.2 Kg
High Rate Discharge Current	280 A
Operating Temperature Range	Discharge: -40°C~60°C Charge: -20°C~50°C Storage: -40°C~60°C
Optimal Operating Temperature Range	25°C ± 5°C
Maximum Charging Current	42.0 A
Cycle charged	2.65 to 2.85 VDC/unit Average at 25°C
Self Discharge	Self-discharge ratio less than 5% per month at 25°C. Please charge batteries before using.
Terminal	D2(M10 Copper Terminals) & D4(Lead Terminals)
Dimensions (L×W×H×TH)	47mm×198mm×685mm×715mm(Total High)



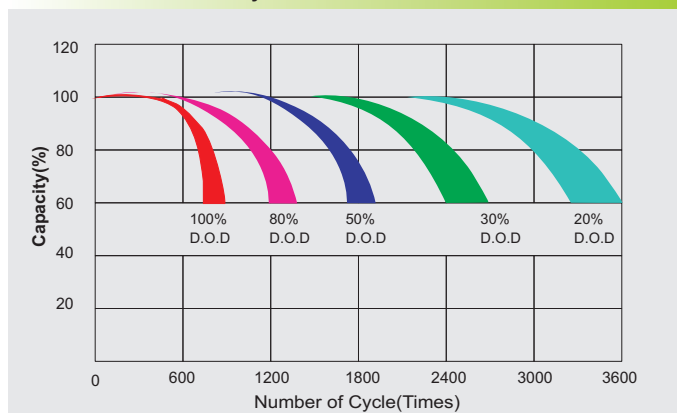
Constant Current Discharge Characteristics : A(25 °C)

F.V/Time	30MIN	1HR	2HR	3HR	4HR	5HR	6HR	8HR	10HR
1.60V	265.3	185.7	107.6	80.6	65.7	59.0	51.1	39.8	32.9
1.65V	259.2	181.5	105.1	78.7	64.2	57.6	49.9	38.9	32.1
1.70V	251.9	176.4	102.2	76.5	62.4	56.0	48.5	37.8	31.2
1.75V	242.3	169.6	98.3	73.6	60.0	53.8	46.7	36.3	30.0
1.80V	231.3	162.0	93.8	70.3	57.3	51.4	44.6	34.7	28.7
1.85V	219.1	153.5	88.9	66.6	54.3	48.7	42.2	32.9	27.2

Constant Power Discharge Characteristics : W(25 °C)

F.V/Time	30MIN	1HR	2HR	3HR	4HR	5HR	6HR	8HR	10HR
1.60V	496.1	357.7	211.4	159.8	130.6	117.2	101.6	79.2	65.5
1.65V	487.2	350.3	207.0	156.8	128.1	114.9	99.6	77.7	64.2
1.70V	479.0	341.0	201.5	152.9	124.8	112.0	97.1	75.6	62.4
1.75V	461.1	328.0	193.8	147.1	120.0	107.7	93.3	72.7	60.0
1.80V	440.6	314.9	186.1	140.4	114.7	102.8	89.1	69.4	57.3
1.85V	419.9	300.7	177.7	133.2	108.7	97.5	84.5	65.8	54.3

Life characteristics of cyclic use



Charge characteristic Curve for cycle use

